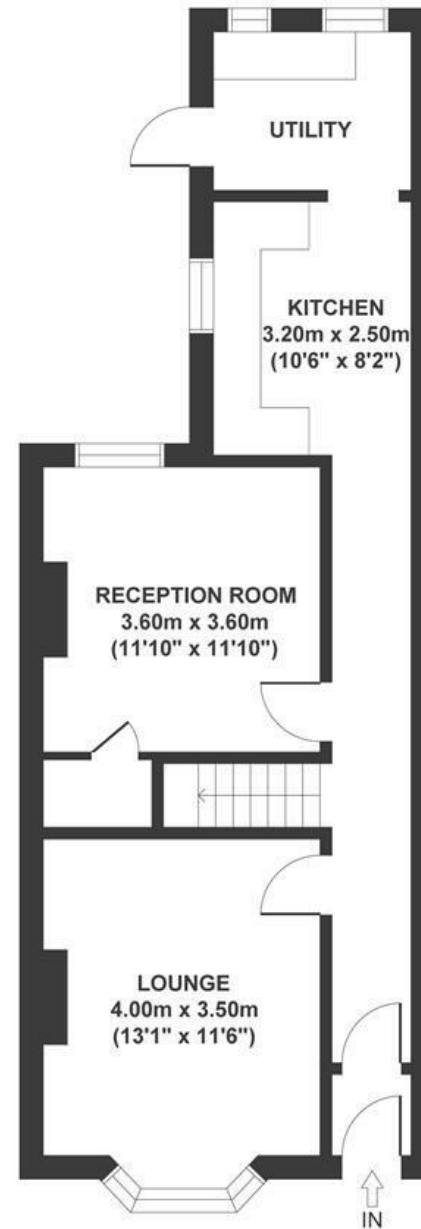


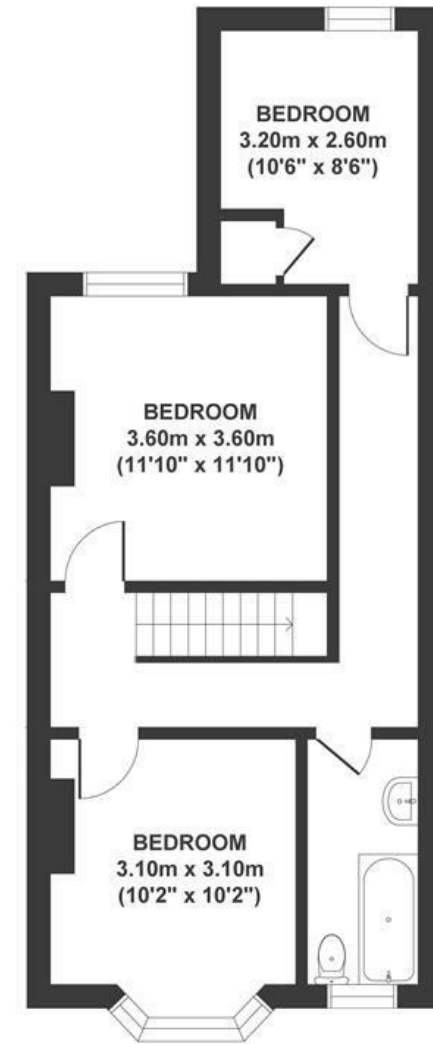
# Maple Road

## HORFIELD

APPROXIMATE FLOOR AREA  
101 SQM / 1087 SQFT



GROUND FLOOR



FIRST FLOOR

**Boardwalk**

# Maple Road , BRISTOL



£450,000



BS7 8RH



3 Bedrooms



1 Bathrooms

*"If you like your food and drink, you'll really enjoy all the local restaurants and bars on Gloucester Road. There are plenty within a few minutes walk. FED is an excellent spot for a morning coffee. We would also highly recommend the wine bar, Cave, where we have spent many happy evenings. Our garden is South East facing and is great for eating outside in the summer. Horfield Common is a lovely green space within 5 minutes. If you work at home, perfect for a lunchtime walk."*

